

A PLAT OF  
JANUARY, 1981

# pinecrest lakes phase II

HOMESITES IN A  
PORTION OF SECTION 21,  
TOWNSHIP 37, SOUTH  
RANGE 41 EAST  
MARTIN COUNTY, FLORIDA

I, LOUISE V. ISAACS,  
COUNTY CLERK OF MARTIN  
COUNTY, FLORIDA, HEREBY  
CERTIFY THAT THIS PLAT  
HAS BEEN FILED FOR RECORD  
IN PLAT BOOK 8,  
PAGE 51, PUBLIC  
RECORDS OF MARTIN COUNTY,  
FLORIDA, THIS  
DAY OF \_\_\_\_\_, A.D.  
19\_\_\_\_.

LOUISE V. ISAACS, CLERK  
MARTIN COUNTY, FLORIDA

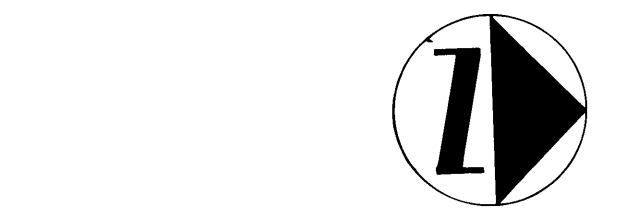
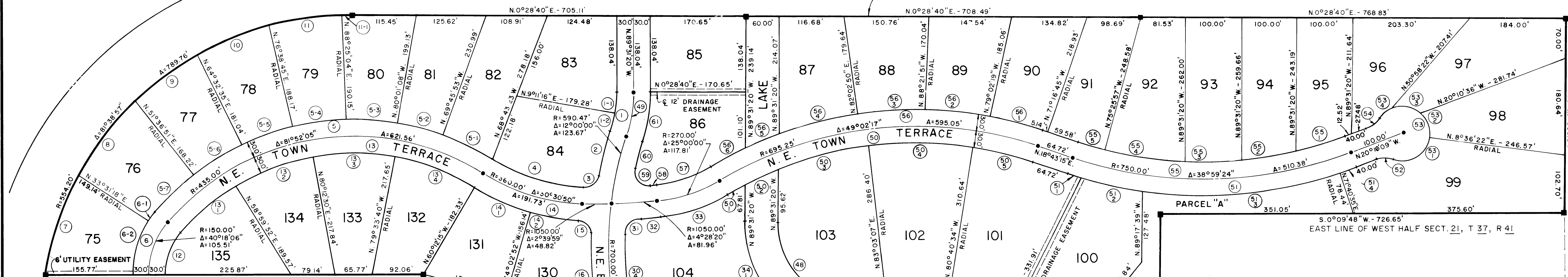
BY \_\_\_\_\_  
FILE NO. \_\_\_\_\_



PINECREST LAKES - PHASE I

PLAT BK. 7 PG. 79

O.R.B. 221  
PAGE 240



UNPLATTED

WEST JENSEN TERRACE  
PLAT BOOK 7 - PAGE 52

N°	R	Δ	A
1.	230.73'	18°04'44"	72.80'
1-1.	230.73'	8°42'36"	35.07'
1-2.	230.73'	9°22'08"	37.73'
2.	620.47'	7°35'19"	82.18'
3.	25.00'	80°51'03"	35.28'
4.	330.00'	30°30'50"	175.75'
5.	465.00'	81°52'05"	664.42'
5-1.	465.00'	12°05'52"	98.18'
5-2.	465.00'	10°15'15"	83.22'
5-3.	465.00'	11°33'49"	93.85'
5-4.	465.00'	11°46'18"	95.54'
5-5.	465.00'	12°06'10"	98.22'
5-6.	465.00'	12°55'43"	104.93'
5-7.	465.00'	11°08'57"	90.48'
6.	180.00'	40°18'06"	126.61'
6-1.	180.00'	6°56'36"	21.81'
6-2.	180.00'	33°21'30"	104.80'
7.	554.20'	19°50'22"	191.90'
8.	554.20'	6°56'14"	163.10'
9.	554.20'	14°59'27"	145.00'
10.	554.20'	14°12'55"	137.50'
11.	554.20'	13°54'23"	134.51'
12.	120.00'	1°50'06"	17.75'
13.	405.00'	40°18'06"	84.41'
13-1.	405.00'	81°52'05"	578.69'
13-2.	405.00'	18°31'58"	131.00'
13-3.	405.00'	21°12'38"	149.93'
13-4.	405.00'	20°13'49"	143.00'
14.	390.00'	29°19'44"	199.63'
14-1.	390.00'	16°22'51"	111.50'
14-2.	390.00'	12°56'53"	88.13'
15.	25.00'	88°56'56"	38.81'
16.	730.00'	32°22'45"	412.54'
16-1.	730.00'	11°53'28"	151.50'
16-2.	730.00'	13°49'30"	176.14'
16-3.	730.00'	6°39'48"	84.90'
17.	25.00'	78°30'25"	34.26'
18.	580.00'	56°51'02"	575.50'
18-1.	580.00'	9°37'49"	97.49'
18-2.	580.00'	15°45'40"	159.55'
18-3.	580.00'	14°37'14"	148.00'
18-4.	580.00'	16°50'19"	170.46'
19.	50.00'	36°52'12"	32.18'
20.	50.00'	25°41'25"	221.43'
20-1.	50.00'	51°33'58"	45.00'
20-2.	50.00'	51°33'58"	45.00'
20-3.	50.00'	51°33'58"	45.00'
20-4.	50.00'	51°33'58"	45.00'
20-5.	50.00'	31°21'03"	27.36'
21.	50.00'	36°52'12"	32.18'
22.	520.00'	55°13'20"	501.18'
22-1.	520.00'	12°00'28"	108.98'
22-2.	520.00'	24°01'52"	218.10'
22-3.	520.00'	19°11'01"	174.10'
23.	25.00'	94°40'59"	41.31'
24.	730.00'	19°08'40"	243.92'
25.	603.13'	45°11'08"	475.65'
25-1.	603.13'	20°17'29"	213.60'
25-2.	603.13'	19°15'52"	202.79'
25-3.	603.13'	5°37'47"	59.26'
26.	50.00'	36°52'12"	32.18'
27.	50.00'	25°41'25"	221.43'
27-1.	50.00'	40°03'27"	34.96'
27-2.	50.00'	67°45'53"	59.14'
27-3.	50.00'	79°34'04"	69.44'
27-4.	50.00'	66°20'58"	57.90'

N°	R	Δ	A
28.	50.00'	36°52'12"	32.18'
29.	663.13'	45°11'08"	522.97'
29-1.	663.13'	9°11'04"	106.30'
29-2.	663.13'	11°17'52"	130.76'
29-3.	663.13'	11°32'13"	133.53'
29-4.	663.13'	11°08'48"	129.01'
29-5.	663.13'	2°01'11"	23.38'
30.	670.00'	60°23'30"	706.20'
30-1.	670.00'	13°36'42"	159.17'
30-2.	670.00'	15°10'23"	177.43'
30-3.	670.00'	17°04'27"	199.66'
30-4.	670.00'	14°31'58"	169.94'
31.	25.00'	84°10'09"	36.73'
32.	1080.00'	1°52'08"	35.23'
33.	300.00'	25°00'00"	130.90'
34.	200.00'	81°23'35"	284.12'
34-1.	200.00'	44°48'50"	156.43'
34-2.	200.00'	36°34'45"	127.69'
35.	50.00'	66°58'13"	58.44'
36.	110.00'	31°51'25"	61.16'
36-1.	110.00'	9°42'14"	37.83'
36-2.	110.00'	12°09'11"	23.33'
37.	50.00'	53°07'54"	46.37'
38.	130.00'	72°35'33"	164.71'
38-1.	130.00'	59°01'27"	133.92'
38-2.	130.00'	13°34'06"	30.79'
39.	200.00'	78°00'30"	272.30'
39-1.	200.00'	26°11'28"	91.42'
39-2.	200.00'	51°49'02"	180.88'
40.	600.00'	12°00'00"	125.66'
40-1.	600.00'	2°00'19"	21.00'
40-2.	600.00'	9°59'41"	104.66'
41.	70.00'	180°00'00"	219.91'
41-1.	70.00'	90°02'23"	110.00'
41-2.	70.00'	89°57'37"	109.91'
42.	665.04'	13°29'57"	156.68'
43.	600.00'	18°57'11"	198.50'
44.	62.00'	141°00'00"	152.58'
45.	50.00'	70°46'12"	61.76'
46.	220.00'	24°35'10"	94.40'
47.	640.00'	7°41'58"	86.00'
47-1.	640.00'	0°23'10"	4.31'
47-2.	640.00'	7°18'48"	81.69'
48.	140.00'	81°23'35"	198.88'
49.	260.73'	18°04'44"	82.27'
50.	665.25'	49°02'13"	569.38'
50-1.	665.25'	3°05'04"	35.81'
50-2.	665.25'	5°41'52"	66.16'
50-3.	665.25'	14°35'13"	169.37'
50-4.	665.25'	16°16'20"	188.93'
50-5.	665.25'	9°23'49"	109.11'
51.	780.00'	38°59'24"	530.80'

NOTES:

1. THERE WILL BE NO DIVISION OF LOTS EXCEPT TO CREATE LARGER LOTS AND ALL LOT ENTRIES WILL BE FROM THE INTERNAL ROAD SYSTEM ONLY.
2. IN ADDITION TO EASEMENTS SHOWN ON PLAT THERE IS A 10' UTILITY EASEMENT CONTIGUOUS TO ROAD RIGHT OF WAY LINE ACROSS ALL LOTS AND A 20' MAINTENANCE EASEMENT CONTIGUOUS TO THE LAKE ACROSS ALL LOTS.

SURVEYOR'S NOTES:

- MONUMENTATION:
- - DENOTES PERMANENT REFERENCE MONUMENT (P.R.M.)
  - - DENOTES PERMANENT CONTROL POINT (P.C.P.)

BEARING BASE

ALL BEARING SHOWN HEREON ARE BASED ON THE NORTH LINE OF SOUTH HALF SECTION 21, TOWNSHIP 37 SOUTH, RANGE 41 EAST, BEING S 89°17'39" E.

J. & J. BLUEPRINTERS, WEST PALM BEACH

TIMBERWICK SUBDIVISION  
PLAT BOOK 2 - PAGE 67

LINDAHL, BROWNING & FERRARI, INC. <small>Consulting Engineers, Planners &amp; Surveyors</small>		2	2
<small>426 INDIANTOWN ROAD JUPITER, FLORIDA 33458</small>		<small>951 COLORADO AVENUE STUART, FLORIDA 33494</small>	